

CABINETRY 1 INC.



PRICE BOOK

4002 Ross Lane, Chanute, KS 66720 Email: sales@cabinetry1.com Phone: 877-733-5883

2 YEAR LIMITED WARRANTY

Cabinetry 1 Inc warrants, for a period of (2) years from the date of delivery to the original purchaser, the product manufactured by it to be free from defects in material and workmanship when properly installed under normal residential use. This warranty is subject to disclaimers set forth herein. Some variation in the finishes of these products is characteristic, in terms of color and texture, and does not constitute a defect. Cabinetry 1 assigns to the original purchaser, to the extent assignable and without recourse to Cabinetry 1, any manufacturer's warranty covering component parts of the product.

This warranty is expressly in lieu of any and all other warranties, expressed or implied, including the warranties of merchantability and fitness for a particular purpose. Cabinetry 1 makes no other representations or warranties of any kind, and shall not be liable for any incidental, consequential or other damages for any alleged negligence, breach of warranty, or upon any other theory, other than the limited warranty first set forth above.

It is expressly understood and agreed that the limit of Cabinetry 1's liability shall be, at Cabinetry 1's sole option, the repair or re-supply of a like quantity of non-defective product, and that Cabinetry 1 shall have no such liability except where the damage results solely from a breach of Cabinetry 1's warranty. Any claim under this warranty shall be deemed waived unless made in writing and received by Cabinetry 1 within thirty (30) days of the date the defect to which each claim is discovered or would have been discovered, and no later event than one (1) years as aforesaid. The term "original purchaser" as used herein, shall be deemed to mean that party for whom the product is originally installed

DISCLAIMERS

Wood and color variations: since wood is a product of nature, cabinets may vary in color, texture and grain. Color variations are a natural occurrence due to species, age, and exposure to UV light and sunlight. For those reasons, new and replacement parts may not match existing cabinet or displayed items.

Glazed and painted finishes: a glazed finish is an uneven finish, glazing on edges and profiles may vary from cabinet to cabinet, door to drawer and line to line. Wood by nature will undergo expansion and contraction movements as it compensates to ever changing humidity and temperature conditions. Finish line may become visible on painted cabinets especially at the joints. All such occurrence is not considered a defect.



CABINETRY 1 INC

Product Price Book

Contents

Wall cabinets	2-4
Base cabinets	5-7
Tall cabinets	8
Vanity Cabinets	9-10
Cabinet Accessories	11-15
Construction Details	16

NOTE: Prices reflect built cabinets with standard door and drawer options. Some custom modifications are available upon request. Please contact your sales representative to inquire about any custom modifications you may be interested in.





CABINETRY 1 INC.

All single door cabinets are invertable for L or R hinging

			FRAMED					FRAMELESS		
Description	Item	SKU	Cubes (cbf)	Weight (lbs)	FAIRVIEW	HUDSON	KINGSTON	AUBURN	BURLINGTON	CENTERVILLE
Single Door (30" HIGH)										
<p>9", 12", 15", 18", 21" 30" 12" • Two adjustable shelves</p>	W930	9207091	2.5	20	117	129	142	117	129	142
	W1230	9207121	3.2	24	144	158	174	144	158	174
	W1530	9207151	4.0	26	167	184	202	167	184	202
	W1830	9207181	4.7	32	193	212	233	193	212	233
	W2130	9207211	5.4	35	217	239	263	217	239	263
	Double Door (30" HIGH)									
<p>24", 27", 30", 33", 36", 42" 30" 12" • Two adjustable shelves</p>	W2430	9207241	6.2	40	245	270	297	245	270	297
	W2730	9207271	6.9	44	286	315	347	286	315	347
	W3030	9207301	7.7	47	312	343	377	312	343	377
	W3330	9207331	8.4	51	337	371	408	337	371	408
	W3630	9207361	9.1	56	362	398	438	362	398	438
	W4230	9207421	10.6	61	413	454	499			
Single Door (36" HIGH)										
<p>9", 12", 15", 18", 21" 36" 12" • Two adjustable shelves</p>	W936	9208091	2.9	24	137	151	166	137	151	166
	W1236	9208121	3.8	28	166	183	201	166	183	201
	W1536	9208151	0.5	32	194	213	234	194	213	234
	W1836	9208181	5.6	38	223	245	270	223	245	270
	W2136	9208211	6.5	40	251	276	304	251	276	304
	Double Door (36" HIGH)									
<p>24", 27", 30", 33", 36" 36" 12" • Two adjustable shelves</p>	W2436	9208241	7.4	48	282	310	341	282	310	341
	W2736	9208271	8.2	52	331	364	400	331	364	400
	W3036	9208301	9.1	55	359	395	435	359	395	435
	W3336	9208331	10.0	60	388	427	470	388	427	470
	W3636	9208361	10.9	64	416	458	504	416	458	504
	Single Door (42" HIGH)									
<p>9", 12", 15", 18", 21" 42" 12" • Three adjustable shelves</p>	W942	9209091	3.4	28	158	174	191	158	174	191
	W1242	9209121	4.9	35	191	210	231	191	210	231
	W1542	9209151	5.5	39	222	244	268	222	244	268
	W1842	9209181	6.5	44	255	280	308	255	280	308
	W2142	9209211	7.5	45	286	315	347	286	315	347



CABINETRY 1 INC.

All single door cabinets are invertable for L or R hinging

WALL CABINETS

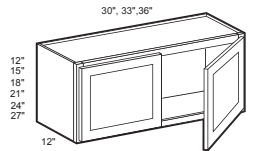
SKU	Cubes (cbf)	Weight (lbs)	FRAMED			FRAMELESS			Item	Description
			FAIRVIEW	HUDSON	KINGSTON	AUBURN	BURLINGTON	CENTERVILLE		
9209241	8.6	56	323	355	391	323	355	391	W2442	
9209271	9.6	60	355	391	430	355	391	430	W2742	
9209301	10.6	64	411	452	497	411	452	497	W3042	
9209331	11.6	70	414	455	501	414	455	501	W3342	
9209361	12.7	73	475	523	575	475	523	575	W3642	
9201301	3.7	22	147	162	178	147	162	178	W3012	
9202301	3.9	25	171	188	207	171	188	207	W3015	
9203301	4.7	27	193	212	233	193	212	233	W3018	
9204301	4.7	33	223	245	270	223	245	270	W3021	
9205301	4.9	39	241	265	292	241	265	292	W3024	
9206301	6.4	44	282	310	341	282	310	341	W3027	
9201331	4.1	24	159	175	193	159	175	193	W3312	
9202331	4.3	26	185	203	223	185	203	223	W3315	
9203331	5.1	30	209	230	253	209	230	253	W3318	
9204331	5.3	36	240	264	290	240	264	290	W3321	
9205331	6.8	41	260	286	315	260	286	315	W3324	
9206331	7.1	45	304	334	367	304	334	367	W3327	
9201361	4.4	25	172	189	208	172	189	208	W3612	
9202361	4.6	29	199	219	241	199	219	241	W3615	
9203361	5.6	33	225	247	272	225	247	272	W3618	
9204361	5.8	39	257	283	311	257	283	311	W3621	
9205361	7.4	45	279	307	338	279	307	338	W3624	
9206361	7.8	51	322	354	389	322	354	389	W3627	
9201306	7.4	27	199	219	241	199	219	241	W301224	
9202306	7.8	30	231	254	279	231	254	279	W301524	
9203306	9.4	32	260	286	315	260	286	315	W301824	
9204306	12.4	44	325	358	394	325	358	394	W302424	
9201336	8.2	29	215	236	260	215	236	260	W331224	
9202336	9	31	249	274	301	249	274	301	W331524	
9203336	10.2	35	282	311	342	282	311	342	W331824	
9205336	13.6	46	351	386	425	351	386	425	W332424	
9201366	8.8	30	232	255	281	232	255	281	W361224	
9202366	9.2	34	269	296	325	269	296	325	W361524	
9203366	11.6	38	303	333	367	303	333	367	W361824	
9205366	14.8	50	377	414	456	377	414	456	W362424	

Double Door (42" HIGH)



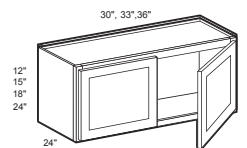
• Three adjustable shelves

Double Door (12",15",18",21",24",27" HIGH)



• One adjustable shelf in 24" height

Double Door (24" DEEP)



One adjustable shelf
Must be installed between two cabinets, wall and cabinet, or supported by refrigerator panels (REP)



CABINETRY 1 INC.

All single door cabinets are invertable for L or R hinging

Description

Item

SKU

Cubes (cbf)

Weight (lbs)

FAIRVIEW

HUDSON

KINGSTON

AUBURN

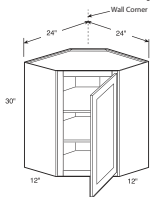
BURLINGTON

CENTERVILLE

FRAMED

FRAMELESS

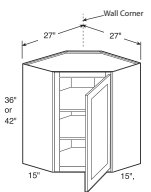
High Corner (30" 36" 42" HIGH)



- Two adjustable shelves
- Clip corner back provides clearance for installation

WCD2430	9207242	11.6	55	306	337	371	306	337	371
WCD2436	9208242	13.8	63	345	380	418	345	380	418
WCD2442	9209242	16.0	71	382	420	462	382	420	462

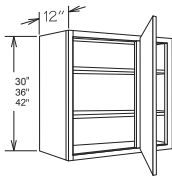
Deep Corner (36", 42" HIGH 15" DEEP)



- 42" tall will have three adjustable shelves
- 36" tall will have two adjustable shelves
- Clip corner back provides clearance for installation

WCD273615	9208272	17.0	74	432	475	523	432	475	523
WCD274215	9209272	20.0	87	477	525	578	477	525	578

Blind Corner (30" 36" 42" HIGH)



- Two adjustable shelves
- Clip corner back provides clearance for installation

WBC3030	9207303	8.4	43	237	261	287	237	261	287
WBC3630	9207363	9.1	50	335	368	405	335	368	405
WBC3036	9208303	10.9	50	295	324	356	295	324	356
WBC3636	9208363	11.8	58	375	412	453	375	412	453
WBC3042	9209303	11.6	57	354	389	428	354	389	428
WBC3642	9209363	12.7	67	418	460	506	418	460	506

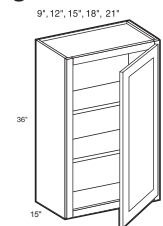
Double Door (15" DEEP)

W302415	9204305	6.8	43	284	312	343	284	312	343
W362415	9204365	8.0	48	332	365	402	332	365	402

Single Door (15" DEEP)

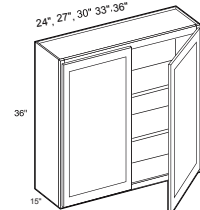
W153615	9208155	5.6	36	220	242	266	220	242	266
W183615	9208185	6.0	42	254	279	307	254	279	307
W243615	9208245	7.4	52	320	352	387	320	352	387
W303615	9208305	10.0	59	405	445	490	405	445	490
W363615	9208365	10.7	69	471	518	570	471	518	570

Single Door (36" HIGH)



- Two adjustable shelves

Double Door (36" HIGH)



- Two adjustable shelves

Double Door (15" DEEP)

W304215	9209305	11.6	68	465	512	563	465	512	563
W364215	9209365	12.1	77	541	595	655	541	595	655



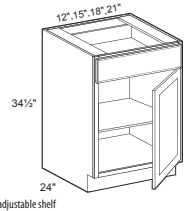
CABINETRY 1 INC.

All single door cabinets are invertable for L or R hinging

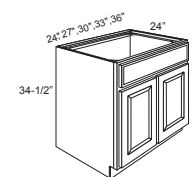
BASE CABINETS

SKU	Cubes (cbf)	Weight (lbs)	FRAMED			FRAMELESS			Item	Description
			FAIRVIEW	HUDSON	KINGSTON	AUBURN	BURLINGTON	CENTERVILLE		
910109	5.3	29	151	166	183	151	166	183	B09-FH	
910112	6.9	45	206	227	250	206	227	250	B12	
910115	8.5	50	235	258	284	235	258	284	B15	
910118	10.1	54	262	288	317	262	288	317	B18	
910121	11.7	58	289	318	350	289	318	350	B21	
910124	13.1	70	320	352	387	320	352	387	B24	
910127	14.9	75	370	407	448	370	407	448	B27	
910130	16.5	80	402	442	486	402	442	486	B30	
910133	18.1	85	431	474	521	431	474	521	B33	
910136	19.7	93	456	502	552	456	502	552	B36	
910139	21.3	96	487	536	590				B39	
910142	22.8	101	515	566	623				B42	
910612	6.9	45	196	216	238	196	216	238	B12-FH	
910615	8.5	50	226	248	273	226	248	273	B15-FH	
910618	10.1	54	241	266	292	241	266	292	B18-FH	
910621	11.7	58	261	287	316	261	287	316	B21-FH	
910624	13.3	70	287	316	347	287	316	347	B24-FH	
910627	14.9	75	331	364	400	331	364	400	B27-FH	
910630	16.5	80	362	398	438	362	398	438	B30-FH	
910633	18.1	85	387	426	469	387	426	469	B33-FH	
910636	19.7	93	405	446	490	405	446	490	B36-FH	
910639	21.3	96	442	486	535	442	486	535	B39-FH	
910642	22.8	101	459	505	556	459	505	556	B42-FH	
910709	4.9	29	190	209	230	190	209	230	HAB09	
910712	5.9	45	222	244	268	222	244	268	HAB12	
910715	6.5	50	250	275	303	250	275	303	HAB15	
910718	8.1	54	278	306	337	278	306	337	HAB18	
910721	9.7	58	306	337	371	306	337	371	HAB21	
910724	11.3	70	345	380	418	345	380	418	HAB24	
910727	12.9	75	398	438	482	398	438	482	HAB27	
910730	14.5	80	442	486	535	442	486	535	HAB30	
910733	16.1	85	460	506	557	460	506	557	HAB33	
910736	17.7	93	507	558	614	507	558	614	HAB36	

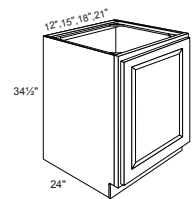
Single Door (24" DEEP)



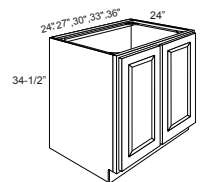
Double Door (24" DEEP)



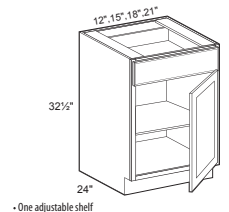
Single Door (24" DEEP)



Double Door (24" DEEP)



Single Door (24" DEEP)





CABINETRY 1 INC.

All single door cabinets are invertable for L or R hinging

					FRAMED			FRAMELESS		
Description	Item	SKU	Cubes (cbf)	Weight (lbs)	FAIRVIEW	HUDSON	KINGSTON	AUBURN	BURLINGTON	CENTERVILLE
Base Drawer (24" DEEP)										
<p>* One standard drawer * Two deep drawers</p>	HA3DB12	910812	6.9	70	272	299	329	272	299	329
	HA3DB15	910815	8.5	75	307	338	372	307	338	372
	HA3DB18	910818	10.1	80	343	377	415	343	377	415
	HA3DB24	910821	13.3	95	415	456	502	415	456	502
	Sink Base (24" DEEP)									
<p>* No shelf May also be used as drop-in cooktop base</p>	HASB24	910924	13.3	50	306	337	371	306	337	371
	HASB27	910927	14.9	52	330	363	399	330	363	399
	HASB30	910930	16.5	54	353	388	427	353	388	427
	HASB33	910933	18.1	56	373	410	451	373	410	451
	HASB36	910936	19.7	62	397	437	481	397	437	481
	HASB42	910942	22.8	68	455	501	551			
Wall End Cabinet										
	AWE1230	9207127	3.5	20	260	286	315	260	286	315
	AWE1236	9208127	4.2	24	313	344	379	313	344	379
	AWE1242	9209127	4.8	28	345	379	417	345	379	417
Wall Wine Rack 12" Deep										
	WR3018	9203304	4.7	23	268	294	324	268	294	324
	Wall Plate Rack									
	WP3018	9203305	4.7	24	321	354	389	321	354	389
Blind Corner (24" DEEP)										
<p>* Indicate R or L for blind side (right shown) * Cabinet can be pulled for exact fit (see installation chart)</p>	BBC3639	910436	19.7	43	380	418	460	380	418	460
	BBC3942	910439	21.3	53	408	449	494	408	449	494
	BBC4245	910442	22.8	63	432	475	523	432	475	523
Lazy Susan (36" BASE)										
<p>* 28" wood or stainless steel Lazy Susan hardware * Doors open 170° for easy access * W (Wood) & S (Stainless Steel)</p>	BLS36S	910536	20.7	95	560	616	677	560	616	677
	BLS36W	910537	20.7	105	647	712	783	647	712	783



CABINETRY 1 INC.

All single door cabinets are invertable for L or R hinging

			FRAMED			FRAMELESS				
SKU	Cubes (cbf)	Weight (lbs)	FAIRVIEW	HUDSON	KINGSTON	AUBURN	BURLINGTON	CENTERVILLE	Item	Description
										Open End
9207124	3.2	12	232	255	281	232	255	281	OE1230	
9208124	8	14	274	301	331	274	301	331	OE1236	
										Microwave
9203303	4.7	54	410	451	497	410	451	497	MC3018	
										Base Microwave
910530	16.5	80	492	542	596	492	542	596	BMC	
										Wall Organizer (12" Deep X 6" High)
9200307	1.6	10	109	120	132	109	120	132	WO306	
9200367	2.0	12	132	145	160	132	145	160	WO366	
										JOHNNY WALL CABINET
9208247	2.0	48	286	315	347	286	315	347	JW2436	
9209247	2.0	56	323	355	391	323	355	391	JW2442	
										Base End Cabinet
911124	12.5	58	377	415	457	377	415	457	BEC24	
911112	6.9	45	232	255	281	232	255	281	BTR12	
911212	6.9	45	232	255	281	232	255	281	BTL12	
										Base cabinet Pullout
950104	3.5	35	230	230	230	230	230	230	BP3	
950105	4.8	40	310	310	310	310	310	310	BP6	
950106	5.3	45	330	330	330	330	330	330	BP9	
950107	6.9	50	350	350	350	350	350	350	BP12	



CABINETRY 1 INC.

All single door cabinets are invertable for L or R hinging

					FRAMED			FRAMELESS		
Description	Item	SKU	Cubes (cbf)	Weight (lbs)	FAIRVIEW	HUDSON	KINGSTON	AUBURN	BURLINGTON	CENTERVILLE
Base Drawer (24" DEEP)										
<p>12", 15", 18", 24", 30", 36" 34 1/2" 24"</p> <ul style="list-style-type: none"> • One standard drawer • Two deep drawers 	3DB12	910212	6.9	70	300	330	363	300	330	363
	3DB15	910215	8.5	75	324	356	392	324	356	392
	3DB18	910218	10.1	80	351	386	425	351	386	425
	3DB24	910224	13.3	95	424	466	513	424	466	513
	3DB30	910230	16.5	106	535	588	647	535	588	647
	3DB36	910236	19.7	119	576	634	697	576	634	697
Sink Base (24" DEEP)										
<p>24", 27", 30", 33", 36", 42" 34 1/2" 24"</p> <ul style="list-style-type: none"> • No shelf • May also be used as drop-in cooktop base 	SB24	910324	13.3	50	277	305	336	277	305	336
	SB27	910327	14.9	52	312	343	377	312	343	377
	SB30	910330	16.5	54	333	366	403	333	366	403
	SB33	910333	18.1	56	360	396	436	360	396	436
	SB36	910336	19.7	62	387	426	469	387	426	469
	SB42	910342	22.8	68	435	479	527			
Single Door Utility (18" WIDE) Double Door Utility (24" WIDE)										
<p>12" - 24" 29-1/2", 35-1/2", 41-1/2" 84", 90", 96" 49-1/4" 12" - 24" 29-1/2", 35-1/2", 41-1/2" 84", 90", 96" 49-1/4"</p> <ul style="list-style-type: none"> • One fixed and five adjustable shelves • Optional roll-out trays 	TU188424	930118	23.8	105	683	751	826	683	751	826
	TU189024	930218	25.5	115	720	792	871	720	792	871
	TU189624	930318	27.2	130	762	838	922	762	838	922
	TU248424	930124	31.4	135	828	911	1,002	828	911	1,002
	TU249024	930224	33.6	147	873	960	1,056	873	960	1,056
	TU249624	930324	35.8	160	922	1,014	1,115	922	1,014	1,115
Oven Cabinet (24" DEEP)										
<p>84", 90", 96" 24" 30"</p> <ul style="list-style-type: none"> • Consult chart for oven cutout dimensions • 3 field removable drawers • 1 1/2" stiles in oven compartment 	OC338424	930133	42.7	176	1,094	1,204	1,324	1,094	1,204	1,324
	OC339024	930233	45.7	185	1,154	1,269	1,396	1,154	1,269	1,396
	OC339624	930333	48.7	190	1,208	1,329	1,462	1,208	1,329	1,462

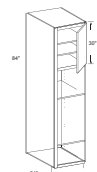
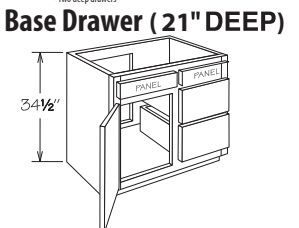
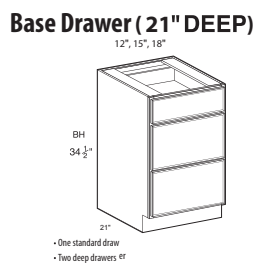
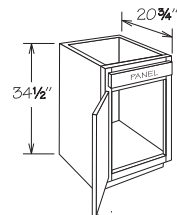
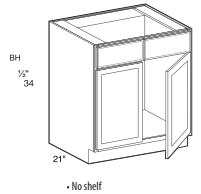


CABINETRY 1 INC.

All single door cabinets are invertable for L or R hinging

Item Description

SKU	Cubes (cbf)	Weight (lbs)	FRAMED			FRAMELESS			Item	Description
			FAIRVIEW	HUDSON	KINGSTON	AUBURN	BURLINGTON	CENTERVILLE		
940321	9.7	42	242	266	293	242	266	293	VSB21	
940324	11.3	44	260	286	315	260	286	315	VSB24	
940327	12.9	45	290	319	351	290	319	351	VSB27	
940330	14.5	46	327	360	396	327	360	396	VSB30	
940333	17.7	51	347	382	420	347	382	420	VSB33	
940336	19.3	54	375	412	453	375	412	453	VSB36	
940342	20.8	58	402	442	486	402	442	486	VSB42	
940345	22.0	62	429	472	519	429	472	519	VSB45	
940348	23.4	66	468	515	567	468	515	567	VSB48	
Vanity Sink Base (21" DEEP)										
940112	4.9	38	243	267	294	243	267	294	VB12	
940115	6.5	42	280	308	339	280	308	339	VB15	
940118	8.1	47	311	342	376	311	342	376	VB18	
940121	9.7	56	325	357	393	325	357	393	VB21	
940124	11.3	68	345	380	418	345	380	418	VB24	
Vanity Base (21" DEEP)										
940212	4.9	60	303	333	366	303	333	366	VDB12	
940215	6.5	66	362	398	438				VDB15	
940218	8.1	72	400	440	484				VDB18	
940224	11.3	84	494	543	597				VDB24	
Base Drawer (21" DEEP)										
941330	15.6	62	391	430	473	391	430	473	VCDR30BH	
942330	15.6	62	391	430	473	391	430	473	VCDL30BH	
941336	19.3	67	444	488	537	444	488	537	VCDR36BH	
942336	19.3	67	444	488	537	444	488	537	VCDL36BH	
Two-Door Linen (21" DEEP)										
940184	22.8	97	660	726	799	660	726	799	VL188421	



• One fixed and five adjustable shelves



CABINETRY 1 INC.

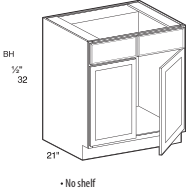
All single door cabinets are invertable for L or R hinging

Description

Item

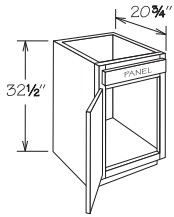
			FRAMED			FRAMELESS		
SKU	Cubes (cbf)	Weight (lbs)	FAIRVIEW	HUDSON	KINGSTON	AUBURN	BURLINGTON	CENTERVILLE

Vanity Sink Base (21" DEEP)



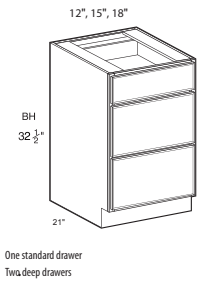
VS	B21VH	940921	9.7	42	242	266	293	242	266	293
VS	B24VH	940924	11.3	44	260	286	315	260	286	315
VS	B27VH	940927	12.9	45	290	319	351	290	319	351
VS	B30VH	940930	14.5	46	327	360	396	327	360	396
VS	B33VH	940933	17.7	51	347	382	420	347	382	420
VS	B36VH	940936	19.3	54	375	412	453	375	412	453
VS	B42VH	940942	20.8	58	402	442	486	402	442	486
VS	B45VH	940945	22.0	62	429	472	519	429	472	519
VS	B48VH	940948	23.4	66	468	515	567	468	515	567

Vanity Base (21" DEEP)



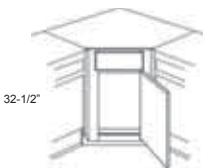
VB	12VH	940712	4.9	38	243	267	294	243	267	294
VB	15VH	940715	6.5	42	280	308	339	280	308	339
VB	18VH	940718	8.1	47	311	342	376	311	342	376
VB	21VH	940721	9.6	56	325	357	393	325	357	393
VB	24VH	940724	11.2	68	345	380	418	345	380	418

Base Drawer (21" DEEP)



VDB	12VH	940812	4.9	60	303	333	366	303	333	366
VDB	15VH	940815	6.5	66	362	398	438	362	398	438
VDB	18VH	940818	8.1	72	400	440	484	400	440	484
VDB	24VH	940824	11.3	84	494	543	597	494	543	597

Conrner Sink Front

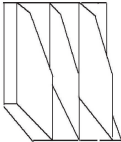
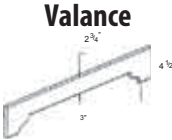
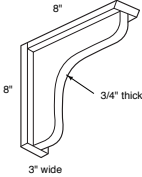
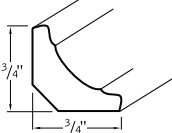


DSB	36	911336	28.9	110	382	420	462	382	420	462
CSF	36	912336	2.6	14	138	152	167	138	152	167



CABINETRY 1 INC.

All single door cabinets are invertable for L or R hinging

SKU	Cubes (cbf)	Weight (lbs)	FRAMED			FRAMELESS			Item	Description
			FAIRVIEW	HUDSON	KINGSTON	AUBURN	BURLINGTON	CENTERVILLE		
Tray Divider										
950130	1.0	10	120	120	120	120	120	120	TD12	
950125	1.0	2	66	66	66	66	66	66	VAL31	
950126	1.0	2	75	75	75	75	75	75	VAL37	
950127	1.0	2	99	99	99	99	99	99	VAL48	
COUNTERTOP BRACKET										
950108	1.0	2	120	120	120	120	120	120	CT8	
Inside Corner Molding										
950808	1.0	2	40	40	40	40	40	40	ICM8	
950010			2	2	2	2	2	2	SHELF CLIP	
950011			5	5	5	5	5	5	SLIDE EPOXY 450	
950012			6	6	6	6	6	6	SLIDE EPOXY 550	
950013			10	10	10	10	10	10	SLIDE ROLLER 450	
950014			12	12	12	12	12	12	SLIDE TOLLER 550	
950015			40	40	40	40	40	40	SLIDE UNDERMOUNT SOFT 450	
950016			45	45	45	45	45	45	SLIDE UNDERMOUNT SOFT 550	


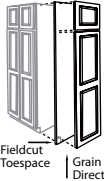
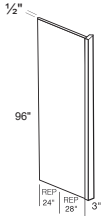
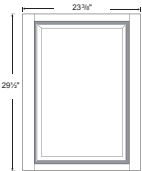
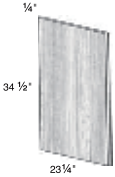
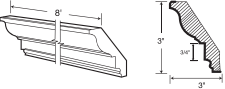


CABINETRY 1 INC.

All single door cabinets are invertable for L or R hinging

Description

Item

					FRAMED			FRAMELESS		
		SKU	Cubes (cbf)	Weight (lbs)	FAIRVIEW	HUDSON	KINGSTON	AUBURN	BURLINGTON	CENTERVILLE
Cultery Tray										
	CUTLEY TRAY-18	950108	1.0	4	80	80	80	80	80	80
	CUTLEY TRAY-24	950109	1.0	6	100	100	100	100	100	100
Matching Tall End Panel										
	TDP2484	950124	4.0	22	250	250	250	250	250	250
	TDP2490	950128	5.0	24	275	275	275	275	275	275
	TDP2496	950129	6.0	25	300	300	300	300	300	300
Refrigerator End Panel with Filler										
	1.5REP2896	950134	2.0	24	180	180	180	180	180	180
	3REP2496	950135	2.0	24	220	220	220	220	220	220
	3REP2896	950136	2.0	25	280	280	280	280	280	280
Matching Base End Panel										
	BDP	950120	1.0	8	180	180	180	180	180	180
Base Skin										
	BES	950121	1.0	2	62	62	62	62	62	62
Classic Crown Molding										
	CCROWN8	950801	1.0	4	141	141	141	141	141	141

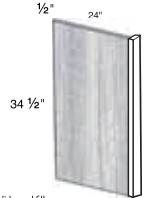


CABINETRY 1 INC.

All single door cabinets are invertable for L or R hinging

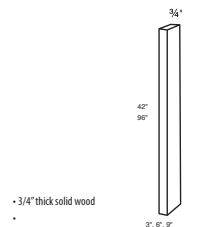
SKU	Cubes (cbf)	Weight (lbs)	FRAMED			FRAMELESS			Item	Description
			FAIRVIEW	HUDSON	KINGSTON	AUBURN	BURLINGTON	CENTERVILLE		
950122	1.0	10	79	79	79	79	79	79	79	DWEP1.5
950123	1.0	10	97	97	97	97	97	97	97	DWEP3
950342		2	80	80	80	80	80	80	80	F342
950396		4	120	120	120	120	120	120	120	F396
950642		3	160	160	160	160	160	160	160	F642
950696		9	240	240	240	240	240	240	240	F696
950496		5	180	180	180	180	180	180	180	FB8
950048		11	260	260	260	260	260	260	260	FBP4848
950096		22	520	520	520	520	520	520	520	FBP4896
950001			5	5	5	5	5	5	5	HINGE 6WAY
950002			10	10	10	10	10	10	10	HINGE 6 WAY SOFT
950003			10	10	10	10	10	10	10	HINGE FRAMLESS SOFT
950004			15	15	15	15	15	15	15	HINGE BLS
950019	3.8	20	140	140	140	140	140	140	140	KD36

24" Deep End Panel with Filler



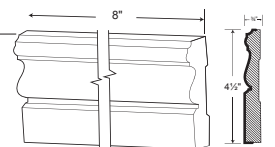
- 1 1/2" or 3" solid wood filler attached
- Reversible
- Matching exterior veneer

Filler Strips



- 3/4" thick solid wood

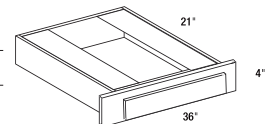
Furniture Base



Island Skin



21" Deep Desk Knee Drawer

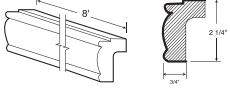
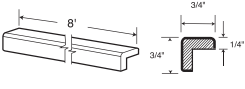
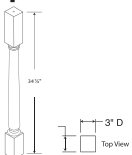
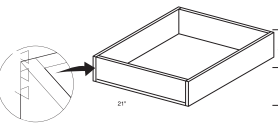
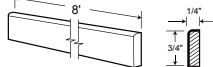
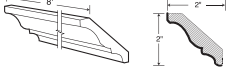


- One full width pencil/cosmetic drawer
- Slab drawer front all door styles
- May be trimmed to 30" minimum



CABINETRY 1 INC.

All single door cabinets are invertable for L or R hinging

			FRAMED				FRAMELESS			
Description	Item	SKU	Cubes (cbf)	Weight (lbs)	FAIRVIEW	HUDSON	KINGSTON	AUBURN	BURLINGTON	CENTERVILLE
Light Baffle Rail										
	LB8	950806		4	140	140	140	140	140	140
	MOULDING CHAIN	950005			40	40	40	40	40	40
Outside Corner Molding										
	OSC135	950810		2	40	40	40	40	40	40
	OSC8	950809		2	40	40	40	40	40	40
	PRICE BOOK	950006			30	30	30	30	30	30
Post Split Post										
	SPO	950017		3	100	100	100	100	100	100
	PO	950007	2.0	5	180	180	180	180	180	180
Roll-out Tray										
	ROT12	950020	1.0	9	100	100	100	100	100	100
	ROT15	950021	1.0	10	110	110	110	110	110	110
	ROT18	950022	1.0	14	120	120	120	120	120	120
	ROT21	950023	1.0	15	130	130	130	130	130	130
	ROT24	950024	1.0	17	140	140	140	140	140	140
	ROT27	950025	1.0	18	150	150	150	150	150	150
	ROT30	950026	1.0	19	160	160	160	160	160	160
	ROT33	950027	1.0	20	170	170	170	170	170	170
	ROT36	950028	1.0	21	180	180	180	180	180	180
	REAR SOCKET	950008			10	10	10	10	10	10
Scribe Molding										
	SCRIBE8	950803		2	40	40	40	40	40	40
Small Crown Molding										
	SCROWN8	950802		4	120	120	120	120	120	120
Sample Door										
	SDR	950009		4	100	100	100	100	100	100



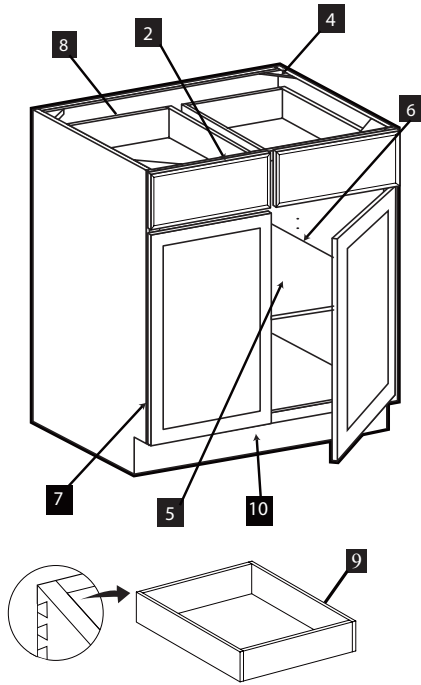
CABINETRY 1 INC.

All single door cabinets are invertable for L or R hinging

SKU	Cubes (cbf)	Weight (lbs)	FRAMED			FRAMELESS			Item	Description
			FAIRVIEW	HUDSON	KINGSTON	AUBURN	BURLINGTON	CENTERVILLE		
950807		2	40	40	40	40	40	40	SM8	Shoe Molding
950805		2	40	40	40	40	40	40	TB8	
950137	1.0	22	173	173	173	173	173	173	TES96	Tall Skin <ul style="list-style-type: none"> • 1/4" thick veneer matching exterior • Field cut to desired height
950101			55	55	55	55	55	55	TUKIT-ESPRESSO	Touch-Up Kit
950102			55	55	55	55	55	55	TUKIT-WHITE	
950103			55	55	55	55	55	55	TUKIT-CAFÉ	
950131	1.0	5	90	90	90	90	90	90	WDP1230	Matching Wall End Panel
950132	1.0	6	100	100	100	100	100	100	WDP1236	
950133	1.0	7	110	110	110	110	110	110	WDP1536	
950138	1.0	7	120	120	120	120	120	120	WDP1242	
950139	1.0	9	130	130	130	130	130	130	WDP1542	
950018		2	38	38	38	38	38	38	WES42	

Construction Details

Framed



Frameless



ID	PART	FRAMED	FRAMELESS
1	Interior	1/2" furniture board or 1/2" UV coated plywood in natural color	5/8" furniture board in white color
2	Face Fronts	3/4" solid hardwood doweled and joint glued	3/4" thick 3D PVC door or 3/4" solid hardwood door
3	End Panels	1/2" furniture board or 1/2" UV coated plywood matching door colors	5/8" furniture board in white color
4	Corner Supports	4 pcs corner braces provide stability and support for counter top attachment	
5	Shelves	5/8" furniture board or plywood, adjustable height in natural finish with matching edgebanding	5/8" furniture board adjustable height in white color
6	Shelf Supports	5mm metal spoon shelf pins	
7	Hinges	Fully concealed, 110° degree 6 way adjustment, soft close	
8	Drawer Slides	3/4" extension self close with 75 lbs capacity or full extension drawer slide as upgrade	
9	Drawer box	5/8" plywood, four side dovetailed with 5/16" captured plywood floor, matching cabinet interior color	double metal wall, front and end, bottom sides as white 5/8" thick furniture board.
10	Toe Kick	1/2" furniture board secured between end panels	

Framed Cabinetry

- 3/4" solid wood doors, drawers
- 3/4" extension undermount hardware
- 5/8" solid wood dovetail drawer
- 1/2" plywood construction

FAIREVIEW



HUDSON



KINGSTON



Frameless Cabinetry

- 3/4" 3D PVC or Solid wood doors, drawers
- Metal drawer with 3/4" extension or undermount soft close hardware
- 5/8" solid wood dovetail drawer
- 5/8" furniture board construction

AUBURN



BURLINGTON



CENTERVILLE



PART	FAIRVIEW	HUDSON	KINGSTON	AUBURN	BURLINGTON	CENTERVILLE
Interior	1/2" furniture core laminated board in natural maple color		1/2" UV coated natural color hardwood plywood	5/8" furniture core laminated board in white color		
Face Fronts	1/2" overlay shaker style, Poplar, in 3 standard colors: white, walnut, espresso	Full overlay, shaker style, Maple Birch, in 3 colors: white, walnut, espresso	Full overlay, shaker style, Maple Birch, in 3 colors: white, walnut, espresso	3/4" thick 3D PVC laminated on MDF or 3/4" solid hardwood	3/4" thick high gloss or high end 3D PVC laminated on MDF	3/4" solid hardwood doveled and joint glued
End Panels	1/2" furniture core laminated board in matching door colors		1/2" UV coated plywood matching door colors	5/8" furniture core laminated board in white color		
Corner Supports	4 pcs corner braces provide stability and support for counter top attachment			4 pcs corner braces provide stability and support for counter top attachment		
Shelves	5/8" furniture board, adjustable height in natural finish with matching edgebanding		5/8" UV coated plywood, adjustable height in natural finish with matching edgebanding	5/8" furniture core laminated board in white color		
Shelf Supports	5mm metal spoon shelf pins			5mm metal spoon shelf pins		
Hinges	Fully concealed, 110° degree 6 way adjustment, soft close			Fully concealed, 110° degree 6 way adjustment ; soft close		
Drawer Slides	3/4 extension self close with 75 lbs capacity		soft close drawers	3/4 extension self close with 75 lbs capacity or full extension drawer slide		soft close drawers
Drawer box	5/8" plywood, four side dovetailed with 5/16" captured plywood floor, all finished natural to match cabinet interior color			double metal wall, front and end, bottom sides as white 5/8" thick furniture board.		double metal wall drawer or 5/8" dovetail drawer
Toe Kick	1/2" furniture board or plywood secured between end panels			5/8" furniture board secured between end panels		



CABINETY 1 INC.

4002 Ross Lane, Chanute, KS 66720

Email: sales@cabinetry1.com

Phone: 877-733-5883